

Miele
IMMER BESSER

fast & flexible

**Miele Induction Cooktops with
PowerFlex and Con@ctivity 2.0 Technology**



Exceptional Performance

Induction Cooktop Overview

The Induction Principle

By generating a magnetic field that turns your cookware into a heating element, Miele's highly efficient induction cooktops heat foods twice as fast as cooking with gas, all while conserving energy. The result is an exceedingly safe, energy-efficient way to cook – one that provides you with even greater control in the kitchen. Induction cooking is a technology like no other! It's all about precision, power and efficiency.

Precise Controls

Whether you are using the lowest setting to melt chocolate or the highest heat to cook your meal, Miele's responsive power settings and precisely targeted heat distribution guarantee the best results for even the most challenging cooking tasks.

Miele's induction cooktops not only excel in excellent user convenience and safety, but also in terms of innovative technology.

TwinBooster Function

When the TwinBooster function is activated, the selected zone provides individual distribution of power for all your cooking needs. For example, when preparing pasta, the water boils at a much more rapid speed than an electric or gas cooktop.

PowerFlex Zone

Whether cooking with one pot, two pots or a casserole dish, the flexibility of this unique feature allows for even, powerful heat throughout the cooking process. Allowing you to combine two cooking zones into one, Miele's PowerFlex zone is perfect for large items and helpful when extra power is required.





The Right Size For Every Kitchen

Miele's induction cooktops are available in a variety of sizes, providing a solution for each individual's needs.



24" wide cooktops with stainless steel frame



30" wide cooktops with stainless steel frame or without for flush-mount option



36" wide cooktops with stainless steel frame or without for flush-mount option



42" wide cooktops with stainless steel frame

Con@ctivity 2.0

Automated Communication Between Your Ventilation Hood and Cooktop

Miele's Con@ctivity 2.0 feature allows you to concentrate fully on cooking, leaving the rest up to its wireless technology. Con@ctivity 2.0 gathers information from the induction cooktop and transmits it to the ventilation hood, ensuring the hood operates at the optimum power setting based on your cooking environment. To avoid unnecessary energy consumption, once the cooktop is turned off the ventilation hood will run for up to 15 minutes, depending on what is being cooked.

Con@ctivity 2.0 can control the following functions for you:

- Switching on the hood's lighting when the cooktop is operating
- Automatic power level adjustment – to suit your cooktop setting
- Automatic delayed shutdown times (in stages of 5 or 15 minutes)
- Automatic switch-off of the hood and cooktop lighting

If needed, you may override automatic operation or use your ventilation hood manually at any time during cooking.

Required Components

The following components are required for Con@ctivity 2.0 to operate properly:

- Network-capable Miele ventilation hood with Con@ctivity 2.0
- Network-capable Miele induction cooktop with Con@ctivity 2.0
- Suitable wireless stick for the induction cooktop (supplied with network-capable Miele ventilation hoods with Con@ctivity 2.0)





Direct Selection Plus

On 30", 36" and 42" Induction Cooktops, each zone has its own back-lit numerical sensors which are not visible when the cooktop is switched off, for a discreet and elegant look.



Auto Heat-Up

Offering the ultimate in cooktop responsiveness, the Auto Heat-Up function provides an initial power boost before reducing the power level for continued cooking.



Timer

Perfect timing: this feature allows you to set a duration for cooking and will alert you once the time is complete.



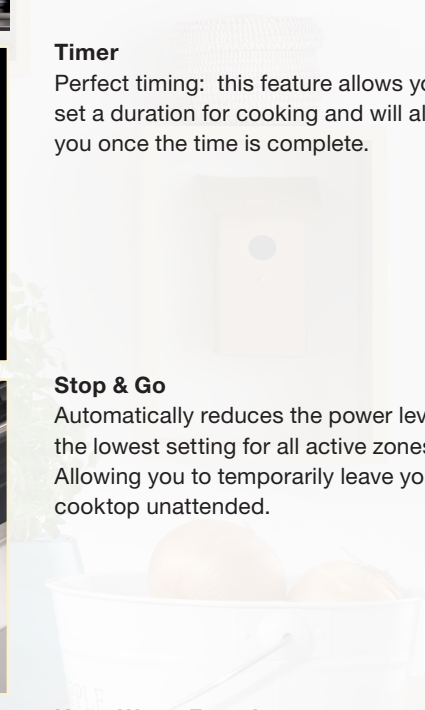
Stop & Go

Automatically reduces the power level to the lowest setting for all active zones. Allowing you to temporarily leave your cooktop unattended.



Keep Warm Function

Food kept at serving temperature: this function controls the temperature in the pan base and prevents food from burning.



Exclusive Features For Gourmet Results

Induction Cooktop Highlights



Direct Selection

On 24" induction cooktops, convenient power output selection via a single, centrally located numerical keypad for each cooking zone.



Con@ctivity 2.0

Con@ctivity 2.0 enables induction cooktops and ventilation hoods to communicate with each other, ensuring the hood operates at the optimum setting based on your cooking environment.



TwinBooster

Veratile cooking: individual distribution of power for all your cooking requirements.



PowerFlex Zone

Allows you to combine two cooking zones into one – perfect for large items, such as a casserole dish. Also helpful when extra power is required.



Variable Cooking Zones

Choose from a variety of cookware sizes that will fit with the variable cooking zones.



Stop & Go

Automatically reduces the power level to the lowest setting for all active zones. Allowing you to temporarily leave your cooktop unattended.



Safety Shut-Off

If a zone has been operating on the same power level for an unusually long time, it switches off automatically.



EasyClean Ceran Surface

Designed with an extremely durable Ceran surface, this smooth, glass-like surface is designed to resist heat transfer.



Pan Size Recognition

Energy saving: the size of the pan is recognized by the cooktop and energy supplied to this area only.



Safety and System Lock

Both functions prevent accidental or unauthorized switching on of the cooktop.

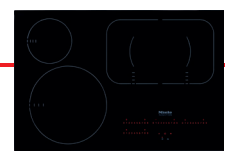
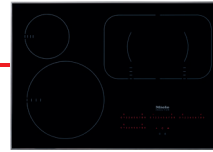


Efficient and Safe

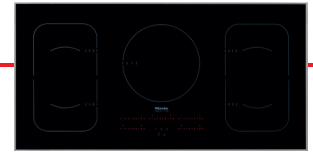
Heat is transferred to your pots and pans immediately and eliminated as soon as the cookware is removed.

Induction Cooktops

Product Overview



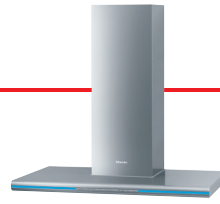
Model number	KM 6320	KM 6360	KM 6365
Induction cooktop			
Width	24"	30"	30"
240V/208V	●	●	●
Controls			
ComfortControl Plus	–	–	–
Direct Selection	●	–	–
Direct Selection Plus	–	●	●
Power levels with digital display	1 – 9 default, 1 – 12 extended	1 – 9 default, 1 – 12 extended	1 – 9 default, 1 – 12 extended
Change of Power levels	●	●	●
Control Panel placement	front center	right front	right front
Design			
Stainless steel frame	●	●	–
Frameless for flush mounting	–	–	●
EasyClean Ceran surface	●	●	●
Cooking zones			
Number of cooking zones	3	4	4
PowerFlex zones	1	1	1
Diameter in inches	9 – 15	9 – 15	9 – 15
Power level in W/Booster/TwinBooster 1/Twin Booster 2	3,550/5,000/7,700	3,550/5,000/7,700	3,550/5,000/7,700
Cooking zone			
Position/Type/Diameter in inches	left/Vario/7 – 11	front left/Vario/7 – 11	front left/Vario/7 – 11
Power level in W/Booster/TwinBooster 1/Twin Booster 2	2,500/3,100/3,850	2,500/3,100/3,850	2,500/3,100/3,850
Cooking zone			
Position/Type/Diameter in inches	back right/Vario/6 – 9	back left/Vario/4 – 6	back left/Vario/4 – 6
Power level in W/Booster/TwinBooster 1/Twin Booster 2	2,200/3,100/3,850	1,450/1,900	1,450/1,900
Cooking zone			
Position/Type/Diameter in inches	front right/Vario/6 – 9	center/Vario/6 – 9	center/Vario/6 – 9
Power level in W/Booster/TwinBooster 1/Twin Booster 2	2,200/3,100/3,850	2,200/3,100/3,850	2,200/3,100/3,850
Cooking zone			
Position/Type/Diameter in inches	–/–/–	back right/Vario/6 – 9	back right/Vario/6 – 9
Power level in W/Booster/TwinBooster 1/Twin Booster 2	–/–/–	2,200/3,100/3,850	2,200/3,100/3,850
Cooking zone			
Position/Type/Diameter in inches	–/–/–	–/–/–	–/–/–
Power level in W/Booster/TwinBooster 1/Twin Booster 2	–/–/–	–/–/–	–/–/–
Convenience features			
Con@ctivity 2.0 – communication between cooktop and hood	●	●	●
Automatic pan size recognition	●	●	●
Extended zones	●	●	●
Stop&Go function/Keeping warm function	●/●	●/●	●/●
Minute minder/Timer/Auto heat-up	●/●/●	●/●/●	●/●/●
Programmable settings (e.g. buzzer tones)	●	●	●
Indicators			
Residual heat indicators/Power level display	●/●	●/●	●/●
Safety			
Safety switch-off	●	●	●
Safety lock/System lock	●/●	●/●	●/●
Fault indication/Integrated cooling fan/Overheating protection	●/●/●	●/●/●	●/●/●
Technical data			
Appliance dimensions in inches (W x H x D)	24 5/8 x 4 1/8 x 21 7/16	30 1/2 x 4 1/8 x 21 7/16	30 5/16 x 4 3/8 x 20 3/16
Electrical requirements	240/208V, 60 Hz, 40 Amps	240/208V, 60 Hz, 40 Amps	240/208V, 60 Hz, 40 Amps
Optional accessories			
HUB 62-22 Gourmet Casserole	●	●	●
Miele Ceramic and Stainless Steel Cleaner	●	●	●
Razor blade glass scraper	●	●	●
Item number	26632052USA	26636052USA	26636562USA



Model number	KM 6370	KM 6375	KM 6377
Induction cooktop			
Width	36"	36"	42"
240V/208V	●	●	●
Controls			
ComfortControl Plus	–	–	–
Direct Selection	–	–	–
Direct Selection Plus	●	●	●
Power levels with digital display	1 – 9 default, 1 – 12 extended	1 – 9 default, 1 – 12 extended	1 – 9 default, 1 – 12 extended
Change of Power levels	●	●	●
Control Panel placement	right front	right front	front center
Design			
Stainless steel frame	●	–	●
Frameless for flush mounting	–	●	–
EasyClean Ceran surface	●	●	●
Cooking zones			
Number of cooking zones	5	5	5
PowerFlex zones	1	1	2
Diameter in inches	9 – 15	9 – 15	9 – 15
Power level in W/Booster/TwinBooster 1/Twin Booster 2	3,550/5,000/7,700	3,550/5,000/7,700	3,550/5,000/7,700
Cooking zone			
Position/Type/Diameter in inches	front left/Vario/6 – 9	front left/Vario/6 – 9	front left/Vario/6 – 9
Power level in W/Booster/TwinBooster 1/Twin Booster 2	2,200/3,100/3,850	2,200/3,100/3,850	2,200/3,100/3,850
Cooking zone			
Position/Type/Diameter in inches	back left/Vario/6 – 9	back left/Vario/6 – 9	back left/Vario/6 – 9
Power level in W/Booster/TwinBooster 1/Twin Booster 2	2,200/3,100/3,850	2,200/3,100/3,850	2,200/3,100/3,850
Cooking zone			
Position/Type/Diameter in inches	center back/Vario/5 1/2 – 8	center back/Vario/5 1/2 – 8	center/Vario/7 – 11
Power level in W/Booster/TwinBooster 1/Twin Booster 2	1,950/2,600	1,950/2,600	2,500/3,100/3,850
Cooking zone			
Position/Type/Diameter in inches	center front/Vario/4 – 6	center front/Vario/4 – 6	back right/Vario/6 – 9
Power level in W/Booster/TwinBooster 1/Twin Booster 2	1,450/1,900	1,450/1,900	2,200/3,100/3,850
Cooking zone			
Position/Type/Diameter in inches	back right/Vario/7 – 11	back right/Vario/7 – 11	front right/Vario/6 – 9
Power level in W/Booster/TwinBooster 1/Twin Booster 2	2,500/3,100/3,850	2,500/3,100/3,850	2,200/3,100/3,850
Convenience features			
Con@ctivity 2.0 – communication between cooktop and hood	●	●	●
Automatic pan size recognition	●	●	●
Extended zones	●	●	●
Stop&Go function/Keeping warm function	●/●	●/●	●/●
Minute minder/Timer/Auto heat-up	●/●/●	●/●/●	●/●/●
Programmable settings (e.g. buzzer tones)	●	●	●
Indicators			
Residual heat indicators/Power level display	●/●	●/●	●/●
Safety			
Safety switch-off	●	●	●
Safety lock/System lock	●/●	●/●	●/●
Fault indication/Integrated cooling fan/Overheating protection	●/●/●	●/●/●	●/●/●
Technical data			
Appliance dimensions in inches (W x H x D)	36 x 4 1/8 x 21 7/16	35 7/8 x 4 3/8 x 20 3/16	42 1/2 x 4 1/8 x 21 7/16
Electrical requirements	240/208V, 60 Hz, 50 Amps	240/208V, 60 Hz, 50 Amps	240/208V, 60 Hz, 50 Amps
Optional accessories			
HUB 62-22 Gourmet Casserole	●	●	●
Miele Ceramic and Stainless Steel Cleaner	●	●	●
Razor blade glass scraper	●	●	●
Item number	26637052USA	26637562USA	26637752USA

Wall Hoods

Product Overview



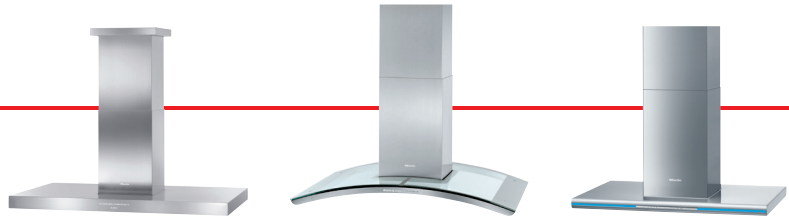
Model number	DA 5196 W	DA 6296 W	DA 6596 W
Installation			
Wall/Island ventilation hood	●/–	●/–	●/–
Width	36" (90 cm)	36" (90 cm)	36" (90 cm)
Venting type			
Vented/Recirculating	●/●	●/●	●/●
User convenience			
Front-mounted controls	●	●	●
Touch on Glass controls	–	–	–
Programmable filter saturation timer	●	●	●
Easy-to-clean CleanCover	●	●	●
Delayed shutdown for 5 or 15 mins.	●	●	●
Con@ctivity 2.0 – communication between hood and induction cooktop	●	●	●
Automatic shut-off of intensive level, programmable for 10 minutes	●	●	●
Dishwasher-safe stainless steel grease filters	1	3	3
Lighting			
Halogen	–	–	–
LED ClearView lighting	●	●	●
Number x W	4 x 3 W	3 x 3 W	3 x 3 W
Multi-colored LED glass-edge lighting	–	● (1 x 10 W)	–
Blower			
Maximum CFM setting	625	625	625
Fan speeds (incl. intensive)	4	4	4
Technical data			
Canopy dimensions in inches (W x H x D)	35 1/4 x 3 9/16 x 20 1/2	35 1/4 x 2 x 20 1/12	35 3/8 x 2 3/4 x 19 11/16
Overall height in inches – vented	28 5/16 – 40 3/16	26 3/4 – 39 3/8	27 1/4 – 39 3/4
Overall height in inches – recirculating	33 1/2 – 44 7/8	31 7/8 – 44 1/2	32 1/4 – 45
Electrical requirements	120 V, 60 Hz, 15 Amps	120 V, 60 Hz, 15 Amps	120 V, 60 Hz, 15 Amps
Plug type	NEMA 5 – 15 plug	NEMA 5 – 15 plug	NEMA 5 – 15 plug
Installation notes			
Vent connection top/rear/side	●/●/–	●/●/–	●/●/–
Telescopic chimney/Telescopic wall bracket	●/●	●/●	●/●
Glass/Stainless steel panels (DRP 6590) – sold separately	–/–	–/–	09047920/09047970
Optional accessories			
Recirculation kit/OdorFree charcoal filter	DUW 20/DKF 12-1	DUW 20/DKF 12-1	DUW 20/DKF 12-1
Reducing Collar	●	●	●
RAL option			
RAL colors (over 200 options)	–	●	●
Item number			
Stainless Steel	28510650USA	28629650USA	28659650USA
Brilliant White	–	–	–
Truffle Brown	–	–	–
Obsidian Black	–	–	–



Model number	DA 6690 W
Installation	
Wall/Island ventilation hood	●/–
Width	36" (90 cm)
Venting type	
Vented/Recirculating	●/●
User convenience	
Front-mounted controls	●
Touch on Glass controls	●
Programmable filter saturation timer	●
Easy-to-clean CleanCover	●
Delayed shutdown for 5 or 15 mins.	●
Con@ctivity 2.0 – communication between hood and induction cooktop	●
Automatic shut-off of intensive level, programmable for 10 minutes	●
Dishwasher-safe stainless steel grease filters	3
Lighting	
Halogen	–
LED ClearView lighting	●
Number x W	3 x 3 W
Multi-colored LED glass-edge lighting	–
Blower	
Maximum CFM setting	625
Fan speeds (incl. intensive)	4
Technical data	
Canopy dimensions in inches (W x H x D)	35 3/8 x 3 3/8 x 19 11/16
Overall height in inches – vented	28 – 40 9/16
Overall height in inches – recirculating	33 1/16 – 45 11/16
Electrical requirements	120 V, 60 Hz, 15 Amps
Plug type	NEMA 5 – 15 plug
Installation notes	
Vent connection top/rear/side	●/●/–
Telescopic chimney/Telescopic wall bracket	●/●
Glass/Stainless steel panels (DRP 6590) – sold separately	–
Optional accessories	
Recirculation kit/OdorFree charcoal filter	DUW 20/DKF 12-1
Reducing Collar	●
RAL option	
RAL colors (over 200 options)	–
Item number	
Stainless Steel	28669050USA
Brilliant White	28669030USA
Truffle Brown	28669000USA
Obsidian Black	28669040USA

Island Hoods

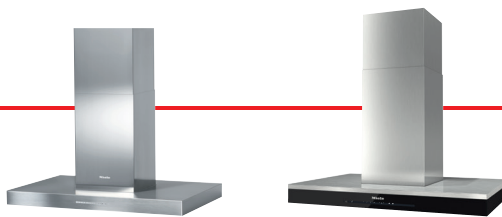
Product Overview



Model number	DA 424 V-6	DA 5106 D	DA 6296 D
Installation			
Wall/Island ventilation hood	–/●	–/●	–/●
Width	48" (120 cm)	39" (100 cm)	36" (90 cm)
Venting type			
Vented/Recirculating	●/–	●/●	●/●
User convenience			
Front-mounted controls	●	●	●
Touch on Glass controls	–	–	–
Programmable filter saturation timer	●	●	●
Easy-to-clean CleanCover	●	●	●
Delayed shutdown for 5 or 15 mins.	●	●	●
Con@ctivity 2.0 – communication between hood and induction cooktop	●	●	●
Automatic shut-off of intensive level, programmable for 10 minutes	●	–	–
Dishwasher-safe stainless steel grease filters	6	1	3
Motorized chimney	●	–	–
Lighting			
Halogen	–	–	–
LED ClearView lighting	●	●	●
Number x W	4 x 3 W	4 x 3 W	4 x 3 W
Multi-colored LED glass-edge lighting	–	–	● (2 x 10 W)
Blower			
Maximum CFM setting	625	625	625
Fan speeds (incl. intensive)	4	4	4
Technical data			
Canopy dimensions in inches (W x H x D)	47 3/16 x 2 3/4 x 27 1/8	39 3/8 x 4 1/2 x 27 9/16	35 3/8 x 2 1/16 x 23 5/8
Overall height in inches – vented	29 3/4 – 41 7/16	29 1/8 – 40 3/16	26 3/8 – 38 3/16
Overall height in inches – recirculating	–	31 1/2 – 43 3/4	28 3/4 – 41
Electrical requirements	120 V, 60 Hz, 15 Amps	120 V, 60 Hz, 15 Amps	120 V, 60 Hz, 15 Amps
Installation notes			
Vent connection top/rear/side	●/–/–	●/–/–	●/–/–
Telescopic chimney/Telescopic wall bracket	●/–	●/–	●/–
Glass/Stainless steel panels (DRP 6590) – sold separately	–/–	–/–	–/–
Optional accessories			
Recirculation kit/OdorFree charcoal filter	–/–	DUI 32/DKF 12-1	DUI 32/DKF 12-1
Reducing Collar	●	●	●
RAL option			
RAL colors (over 200 options)	–	–	●
Item number			
Stainless Steel	28424655USA	28510655USA	28629655USA
Brilliant White	–	–	–
Truffle Brown	–	–	–
Obsidian Black	–	–	–

Island Hoods

Product Overview



Model number	DA 6596 D	DA 6690 D
Installation		
Wall/Island ventilation hood	–/●	–/●
Width	36" (90 cm)	36" (90 cm)
Venting type		
Vented/Recirculating	●/●	●/●
User convenience		
Front-mounted controls	●	●
Touch on Glass controls	–	●
Programmable filter saturation timer	●	●
Easy-to-clean CleanCover	●	●
Delayed shutdown for 5 or 15 mins.	●	●
Con@ctivity 2.0 – communication between hood and induction cooktop	●	●
Automatic shut-off of intensive level, programmable for 10 minutes	●	●
Dishwasher-safe stainless steel grease filters	3	4
Motorized chimney	–	–
Lighting		
Halogen	–	–
LED ClearView lighting	●	●
Number x W	4 x 3 W	4 x 3 W
Multi-colored LED glass-edge lighting	–	–
Blower		
Maximum CFM setting	625	625
Fan speeds (incl. intensive)	4	4
Technical data		
Canopy dimensions in inches (W x H x D)	35 3/8 x 2 3/4 x 23 9/16	35 3/8 x 3 3/8 x 23 9/16
Overall height in inches – vented	27 3/16 – 39	27 3/4 – 39 9/16
Overall height in inches – recirculating	29 1/2 – 41 3/4	30 1/8 – 43 5/16
Electrical requirements	120 V, 60 Hz, 15 Amps	120 V, 60 Hz, 15 Amps
Installation notes		
Vent connection top/rear/side	●/–/–	●/–/–
Telescopic chimney/Telescopic wall bracket	●/–	●/–
Glass/Stainless steel panels (DRP 6590) – sold separately	09048010/09048020	–
Optional accessories		
Recirculation kit/OdorFree charcoal filter	DUI 32/DKF 12-1	DUI 32/DKF 12-1
Reducing Collar	●	–
RAL option		
RAL colors (over 200 options)	●	–
Item number		
Stainless Steel	28659655USA	28669055USA
Brilliant White	–	28669035USA
Truffle Brown	–	28669005USA
Obsidian Black	–	28669045USA





Miele, Inc.
9 Independence Way
Princeton, NJ 08540
Telephone: 800.843.7231
Email: moreinfo@mieleusa.com
Website: www.mieleusa.com